



Aynho Crescent

Kingsthorpe, Northampton

oriordanbond
SALES & LETTINGS



Aynho Crescent

Kingsthorpe

NN2 8JY

PRICE £200,000

O'Riordan Bond is pleased to market this large two double bedroom terraced property located in this popular area of Kingsthorpe. The property is within walking distance to local schools, shops and a public bus stop.

Accommodation comprises entrance hall with storage cupboard, separate kitchen and a dual aspect living room with French doors opening to the garden. From the first floor landing are two large double bedrooms serviced by a modern three-piece family bathroom. Outside is an enclosed rear garden with converted outbuilding ideal for home office or studio. To the front of the property is a small low maintenance garden. Further benefits include uPVC double glazing and gas radiator heating. (B/722/M)

Additional information

- Council Tax Band: B
- Energy Efficiency Rating:

Viewing

Viewing strictly by appointment – details below

Disclaimer

O'Riordan Bond Estate Agents Limited has not tested apparatus, equipment, fittings or services and so cannot verify they are in working order. The buyer is advised to obtain verification from their solicitor or surveyor.

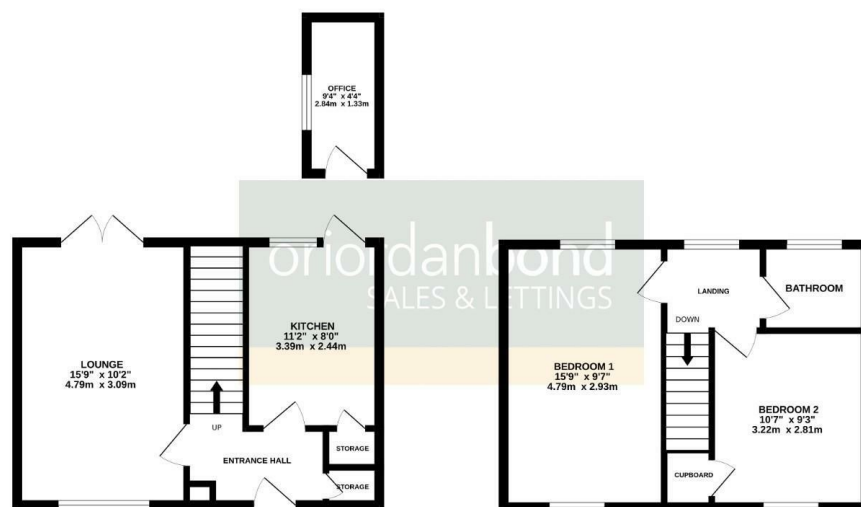
O'Riordan Bond Kingsthorpe Sales

01604 722007

kingsthorpe@oriordanbond.co.uk

GROUND FLOOR
381 sq.ft. (35.4 sq.m.) approx.

1ST FLOOR
341 sq.ft. (31.6 sq.m.) approx.



TOTAL FLOOR AREA: 722 sq.ft. (67.0 sq.m.) approx.

Whilst every attempt has been made to ensure the accuracy of the floorplan contained here, measurements of doors, windows, rooms and any other items are approximate and no responsibility is taken for any error, omission or mis-statement. The plan is for illustrative purposes only and should be used as such by any prospective purchaser. The services, systems and appliances shown have not been tested and no guarantee as to their operability or efficiency can be given.

Made with Metropix (2025)

